



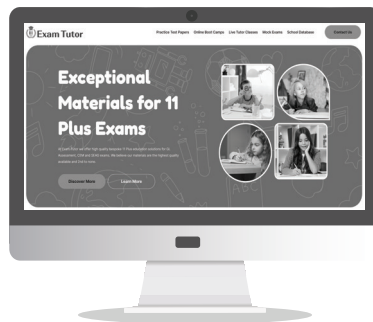
Exam Tutor

www.examtutor.co.uk | sales@examtutor.co.uk

SEAG ENTRANCE EXAM PRACTICE PAPER 1

2025 EDITION

Time 60 Minutes



Visit www.examtutor.co.uk for Tutor video explanations
for every question in this practice paper.

Name: _____

Score= _____ /56 Percentage = _____

English – Main Test

In this exercise there are some mistakes with **punctuation** or use of **capital letters**.
On each numbered line there is either one mistake or no mistake. Find the group of words with the mistake in it and **mark its letter on your answer sheet**. If there is no mistake, mark **N**.

Punctuation Exercise

1

The childrens' raincoats were caked in mud and grass stains,
from all of their outdoor exploring.

A B C D

2

'It's bath time Charlie! Where are you? quickly now, it's nearly
your bedtime!' roared mum.

A B C D

3

Sarah was dismayed to find her dog's leash had snapped. 'Stop Harry!' she cried, as he
made a beeline straight for the forest.

A B C D

4

'Can you help me find my dad,' the little girl sobbed to the shop assistant.
'Of course, what's your name?' responded the shop assistant reassuringly.

A B C D

5

George, whos best friends with Katie, is the most popular boy in the class.

A B C D

In this exercise you have to choose the **best** word, or **group of words**, to complete each numbered line so that the passage makes sense and is written in correct English. Choose the best answer and **mark its letter on your answer sheet**.

Grammar Exercise

Malala Yousafzai is a young, female activist from Pakistan, who is

6

acclaimed

A

claimed

B

pertained

C

detained

D

remained

E

for her notable charity work and support of girls' and women's rights to quality education. She was targeted and shot by a group who found her influence threatening and

7

proposed

A

supposed

B

deposed

C

closed

D

opposed

E

the idea of girls having the same educational opportunities as boys.

8

In spite

A

Despite

B

However

C

Even though

D

Regardless

E

this attack, Malala became more determined than ever to speak out about her beliefs, on behalf of other girls. Then in 2014, the 'Malala Fund' was established to

9

assure

A

reassure

B

ensure

C

procure

D

allure

E

there are financial means to support free, safe and quality schooling for girls who

10

likewise

A

otherwise

B

alongside

C

beside

D

unlikely

E

would not have this opportunity. Following this, Malala received the Nobel Peace Prize in 2014, making her the youngest person to ever receive this award.

In this exercise there are some **spelling** mistakes. On each numbered line there is either **one** mistake or **no** mistake. Find the group of words with the mistake in it and mark its letter on your answer sheet. If there is no mistake, mark **N**.

Spelling Exercise

11

The king was reknowned for making speeches at many public events and ceremonies he attended.

A B C D

12

Etiquette at the dinner table is commonly thought of as demonstrating good manners and acceptable behaviour.

A B C D

13

Losing his job turned out to be a blessing in disguise, as then he decided to start up his own business.

A B C D

14

The family felt great relief after the completion of their treacherous journey through the storm, to reach their final destination.

A B C D

15

She possessed a great willingness to try and accomplish very challenging tasks, much to the astonishment of those around her.

A B C D

Read the whole passage carefully, then answer the questions that follow.

Allan Quatermain

By H. Rider Haggard

1. The moon went down. For a long while she had been getting nearer and
2. nearer to the horizon. Now she finally sank and left the world in darkness
3. save for a faint grey tinge in the eastern sky that palely heralded the dawn.

4. Mr Mackenzie stood, watch in hand, his wife clinging to his arm and
5. striving to stifle her sobs. 'Twenty minutes to four,' he said, 'it ought to be
6. light enough to attack at twenty minutes past four. Captain Good had better
7. be moving, he will want three or four minutes' start.' Good gave one final
8. polish to his eyeglass, nodded to us in a jocular sort of way—which I could
9. not help feeling it must have cost him something to muster up—and, ever
10. polite, took off his steel-lined cap to Mrs Mackenzie and started for his
11. position at the head of the kraal, to reach which he had to make a detour
12. by some paths known to the natives. Just then one of the boys came in
13. and reported that everybody in the Masai camp, with the exception of
14. the two sentries who were walking up and down in front of the
15. respective entrances, appeared to be fast asleep. Then the rest of us
16. took the road. First came the guide, then Sir Henry, Umslopogaas, the
17. Wakwafi Askari, and Mr Mackenzie's two mission natives armed with
18. long spears and shields. I followed immediately after with Alphonse and
19. five natives all armed with guns, and Mr Mackenzie brought up the rear
20. with the six remaining natives.

Please answer these questions. (Look at the passage again if you need to.)
You should choose the **best** answer and mark its letter on your answer sheet.

16 In the text we are told 'Now she finally sank and left the world in darkness' (line 2). This is an example of...

- A a simile
- B exaggeration
- C personification
- D a metaphor
- E alliteration

17 What type of word is 'immediately' used in line 18?

- A pronoun
- B preposition
- C adjective
- D adverb
- E verb

18 What word below would be a synonym for the word 'jocular' used in line 8?

- A strange
- B evil
- C wary
- D uncomfortable
- E funny

For these questions you **have to write your answers**, neatly, in the boxes provided on your answer sheet.

23 List two adjectives found in lines 1 to 3 of the text.

24 What word in line 30 is a synonym for 'came to a stop'?

25 The phrases 'crept forward as silently as a leopard on his prey' and 'gliding like ghosts' in line 25 are both examples of what literary device?

26 What word is a synonym for 'local citizen' which is used throughout the passage?

27 From lines 28 to 32, name 3 different descriptions of Alphonse's physical features which tell us he was scared.

28 The kraal mentioned in the passage is an enclosure for what type of livestock?

Maths – Main Test

29

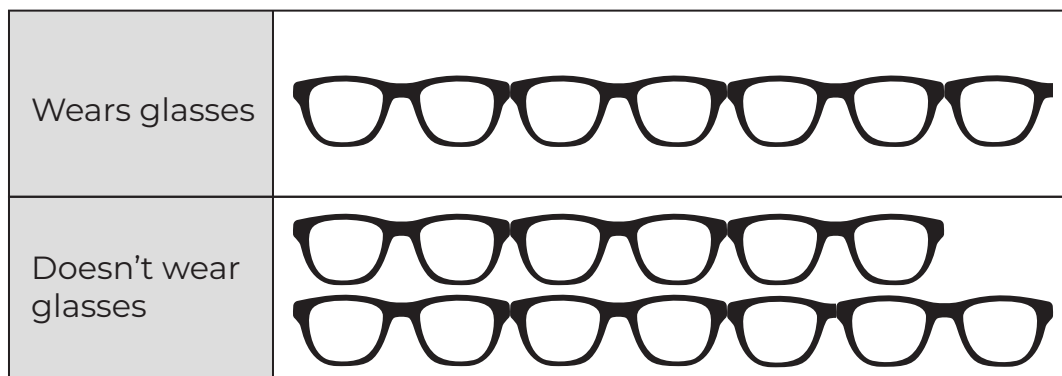
Which of these is 3450?

- A 3442 rounded to the nearest 10
- B 3457 rounded to the nearest 10
- C 3452 rounded to the nearest 10
- D 3490 rounded to the nearest 100
- E 3455 rounded to the nearest 10

30

This pictogram shows the number of students from years P6 to P7 who wear glasses, 120 students in total were surveyed.

How many students wear glasses?



- A 42
- B 48
- C 78
- D 72
- E 46

31

Alisha picks four cards:



She arranges them to make a four-digit number. The first digit is $\times 3$ bigger than the third digit and the second digit is $\times 1.5$ smaller than the fourth digit.

Which of these is Alisha's four-digit number?

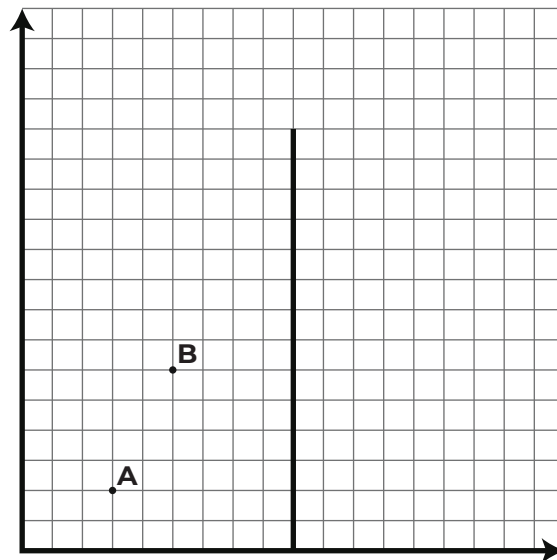
- A 4963
- B 3694
- C 9436
- D 9346
- E 9364

32

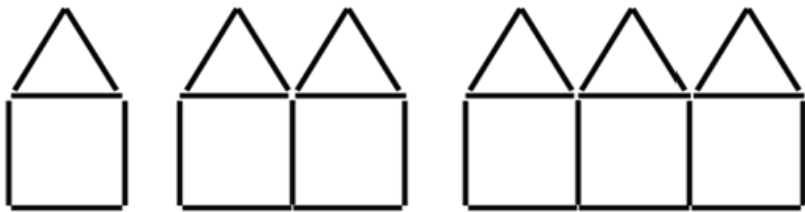
The points $A = (3, 2)$ and $B = (5, 6)$ mark two vertices of a trapezium.

Using the line of symmetry marked on the grid, identify the coordinates of the vertices C and D

- A (9, 6) and (11, 2)
- B (6, 13) and (2, 15)
- C (13, 6) and (2, 15)
- D (6, 13) and (2, 15)
- E (13, 6) and (15, 2)



33



Pattern 1 Pattern 2 Pattern 3

Using the patterns 1 to 3 select the missing information from the table below.

Pattern	1	2	3	4	5
Number of matchsticks	?	?	?	?	?

How many matchsticks can be found in pattern 4 and 5?

- A** 16, 21
- B** 21, 26
- C** 24, 28
- D** 26, 31
- E** 20, 25

34

Which of these letters contain both perpendicular and parallel lines?

- A** L **B** N **C** F **D** M **E** T

35

A cutlery drawer contains three types of spoons. A dessert spoon is 18cm long, a tablespoon is 6.5cm longer than a teaspoon and a teaspoon is half the length of a dessert spoon.

How much longer would the length of three tablespoons be than a teaspoon, a tablespoon and a dessert spoons' combined length?

- A** 46.5cm
- B** 4m
- C** 42.5cm
- D** 400mm
- E** 40mm

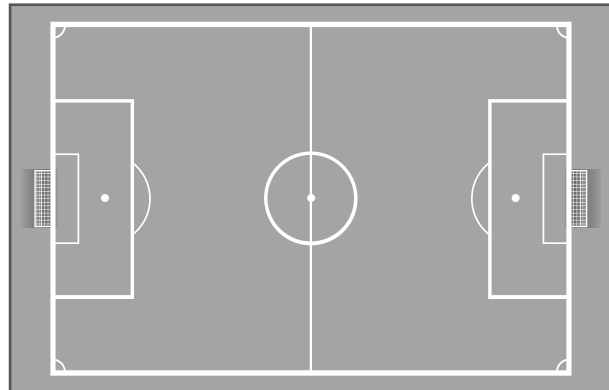
41

After fundraising a school football club is able to double the size of their previous pitch.

Area of the previous pitch: $55 \times 30 = 1650\text{m}^2$

What is the perimeter of the new pitch?

- A 170m
- B 340m
- C 6600m
- D 560m
- E 510m

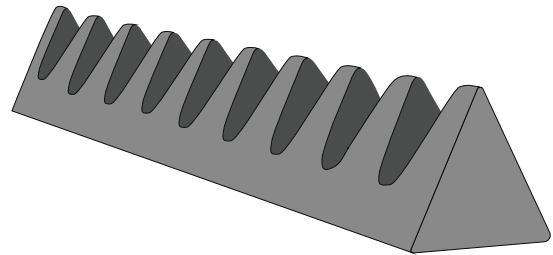


42

Charlie opens up a Toblerone box and lays it out flat. He finds 2 triangular faces connected on either end of 3 rectangular faces.

What shape is this box a net of?

- A Triangular-based pyramid
- B Square-based pyramid
- C Cone
- D Triangular prism
- E Cylinder



43

At a zoo pandas are each fed 731g of bamboo for lunch and another 232g for dinner. There are 5 pandas at the zoo in total. **How much bamboo do they consume altogether in a day?**

- A 2495g
- B 2500g
- C 4251g
- D 4815g
- E 3024g

44

Kaleb, Tim and Yvonne took part in a long-distance running relay. The relay began at 9am Kaleb ran first for 65 minutes, Tim ran for 72 minutes and Yvonne ran for 75 minutes.

When did they finish the relay?

- A 12:32 pm
 - B 11: 52 am
 - C 12:32 am
 - D 12: 28 pm
 - E 11: 48 am
-

45

Find the value of 'a' in the equation:

$$2a + 6 = 20$$

- A 52 B 26 C 7 D 13 E 14
-

46

Grace practised the high jump every day at school for a week. Her results are shown below:

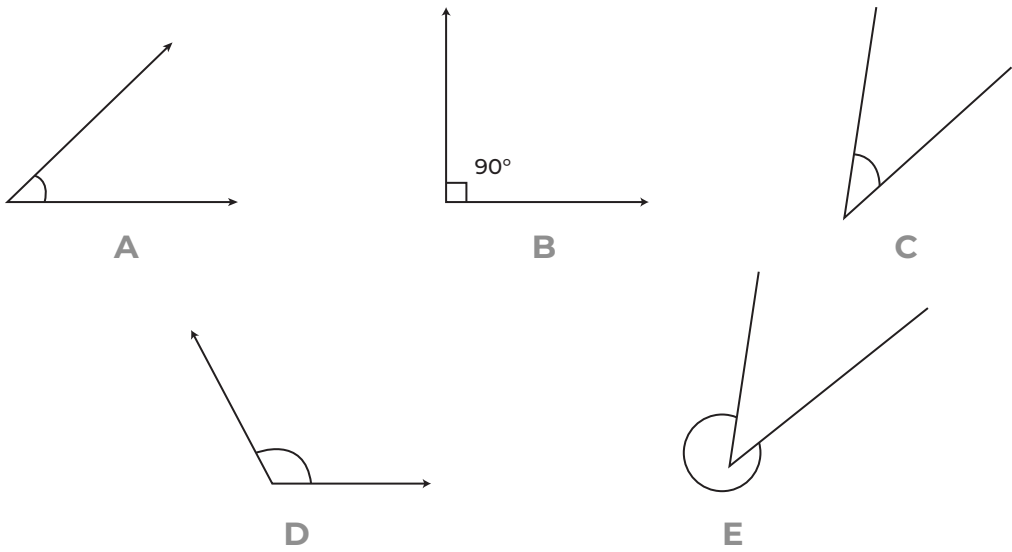
Monday	Tuesday	Wednesday	Thursday	Friday
143 cm	146 cm	153 cm	158 cm	155 cm

What is the mean height she jumped?

- A 155 cm
 - B 151 cm
 - C 108 cm
 - D 150 cm
 - E 148 cm
-

47

Which of these angles is greater than obtuse?



48

Which fraction is the smallest?

- A $\frac{2}{3}$ B $\frac{8}{4}$ C $\frac{3}{10}$ D $\frac{1}{4}$ E $\frac{1}{2}$

49

Elise was given a 130 ml bottle of medicine with instructions to take 5ml twice a day until the bottle is finished. **How many days will it take to finish the bottle following these instructions?**

- A 13
B 26
C 14
D 25
E 10

50

Select the number to complete the equation.
 $625 \div 5^2 =$ _____

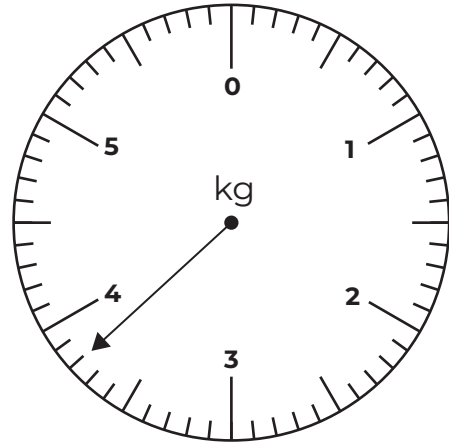
- A 5 B 1 C 50 D 125 E 25

51

Twenty tomatoes of the same size and weight are weighed on a scale shown below.

What is the weight of one tomato?

Write your answer in grams.



52

The duration of a film screening premiere lasted 165 minutes and finished at 23:22.

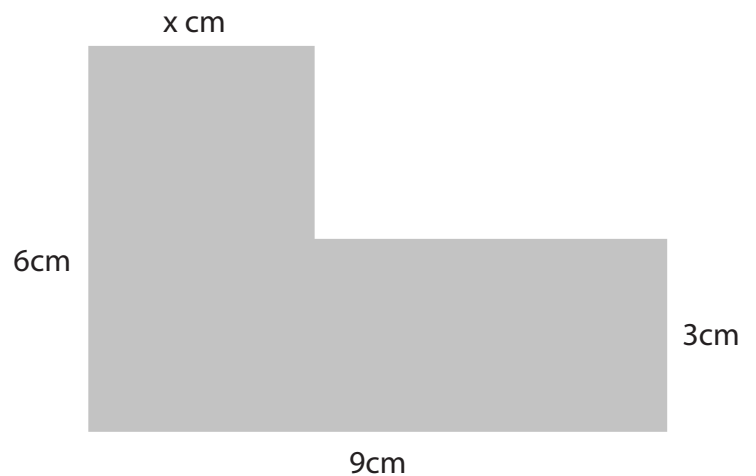
At what time did the film begin?

Write your answer as a 12 hour time, including am or pm.

53

The area of this compound shape is 42cm^2 .

What is the value of X?

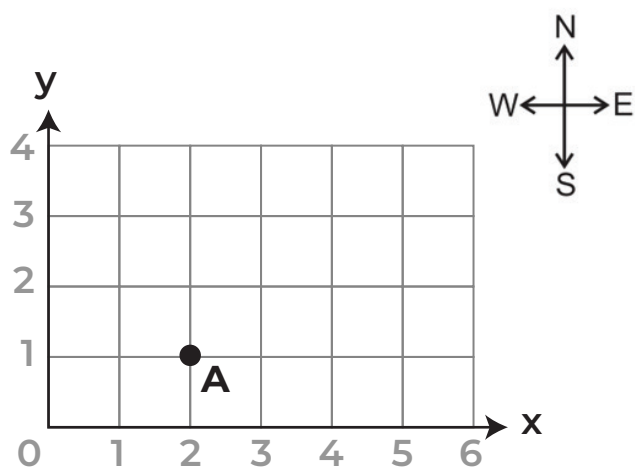


54

Mary-Ann starts walking on a route beginning at point A, she walks 2 squares North, next 2 squares East and then 1 square South.

What are the coordinates for the point her route takes her to?

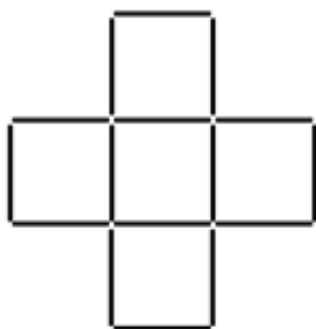
(,)



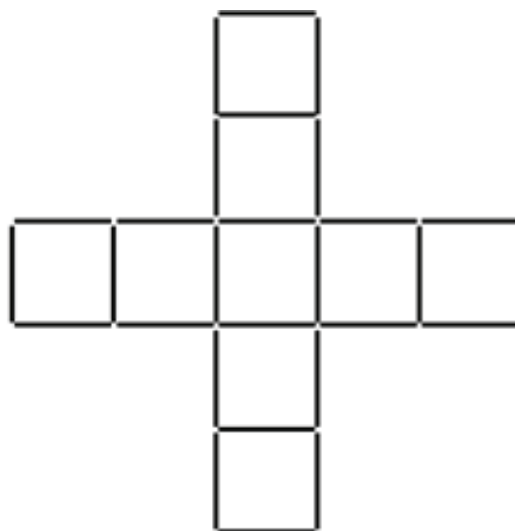
55



Pattern 1



Pattern 2



Pattern 3

How many squares would pattern 9 have?

56

If $\frac{1}{4}$ of $a = 15$

What is $\frac{2}{3}$ of a ?

End of Test